

A-1946 Empuriabrava

New development in Norfeu, house on canal with private mooring of 12m. 507m² of land.

The house has a plot of 507m² and a living area of 144,32m².

On the ground floor we find a bedroom with bathroom, a toilet and a large living room with open kitchen of 40.86m² from the large windows we have access to the pool, jacuzzi and garden from where we have access to the mooring of 12m.

We have a garage of 18.89m² and parking inside the plot.

On the first floor there are two en-suite bedrooms, two double bedrooms and a complete bathroom.

Transaction	Sale
Category	House with mooring
Work category	New construction
Surface area	144 m ²
Rooms	5
Bathrooms	4 bathrooms , 1 toilet
Parking	Yes
Garage	Yes
Terrace	Yes
Garden	Yes
Mooring	Yes
Swimming pool	Yes
Central heating	Yes
Air conditioning	Yes
Land	507 m ²
Canal	Yes

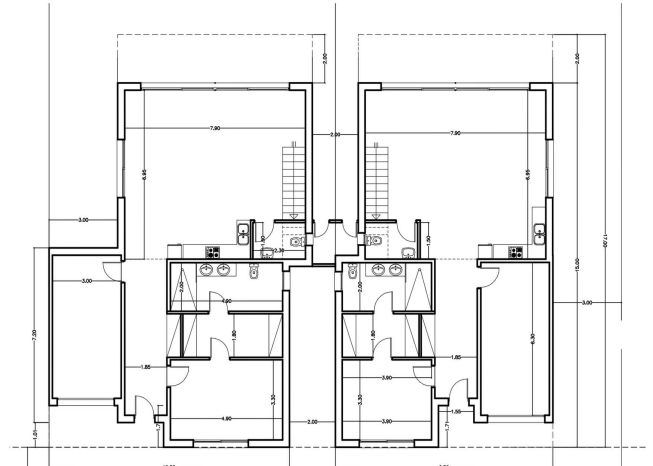
1.350.000 €





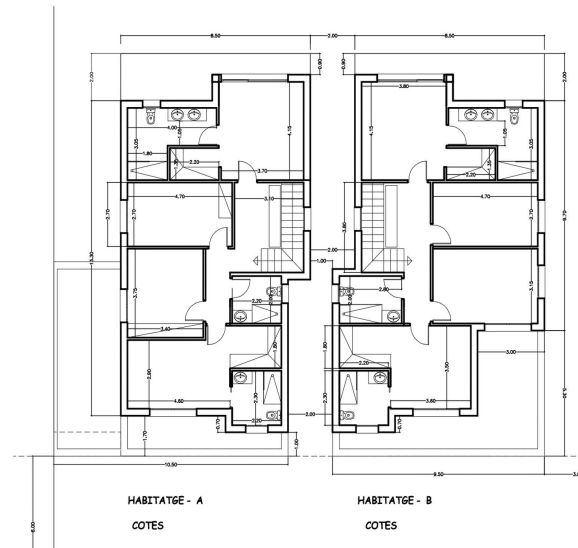
HABITATGE - A
UTE-A
114,08m²
84,1200 m²

HABITATGE - B
UTE-B
115,23m²
83,0800 m²



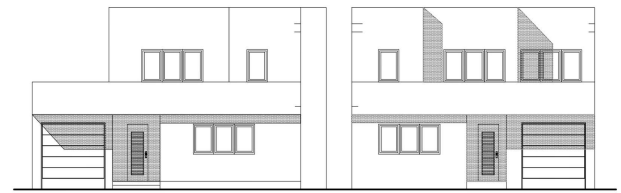
HABITATGE - A
COTES

HABITATGE - B
COTES



HABITATGE - A
COTES

HABITATGE - B
COTES



ALÇAT PRINCIPAL



ALÇAT POSTERIOR